

LANTERN

UNIVERSITY OF WISCONSIN-LA CROSSE ALUMNI MAGAZINE

Wowed by Wittich

WITTICH HALL

PHYSICAL
19 EDUCATION 16

LANTERN

UW-LA CROSSE ALUMNI MAGAZINE WINTER 2020-21 | VOL. 47, NO.1

EDITOR

Brad Quarberg, '85 | Distinguished University
Relations Specialist

ART DIRECTOR

Dave Piro | Creative Services Specialist
University Communications

WRITERS

Kyle Farris
David Johnson, '92
Kjerstin Lang
Janie Morgan, '85 & '86
Brad Quarberg, '85
Nick Ragner, '14

PHOTOGRAPHY

Michael Lieurance, '02



www.uwlax.edu

The Lantern is published in winter and summer for UWL alumni.
Deadlines for copy are April 1 and Oct. 1.

SUBMIT NEWS ITEMS TO:

Brad Quarberg, University Communications, bquarberg@uwlax.edu
1725 State St. La Crosse WI 54601

SUBMIT ADDRESS CHANGES TO:

Alumni Association, alumni@uwlax.edu, 877UWLALUM
(877.895.2586) 608.785.8489

UWL Murphy Library archives all past issues of the Alumnus/
Lantern magazine. See: digitalcollections.uwlax.edu

CLASS NOTES ONLINE

Go to www.uwlaxalumni.org for complete class notes each quarter.
Click on "News," then "Class Notes."

Class notes policy: The UWL Alumni Association publishes class
notes and obituaries online in January, April, July and October.
The deadline is the 1st of the month prior to the quarterly posting.
See www.uwlaxalumni.org for details.

COVER STORY



WOWED BY WITTICH

Renovation of the campus' second
oldest building is impressive

FEATURE STORIES



TOP PROF

Shelly Leshner named American Physical Society Fellow



LOCKUP LITERATURE

Daughters honor parents with jail literacy fund



A REAL-LIFE GAME OF CLUE

Alum investigates what's killing freshwater mussels

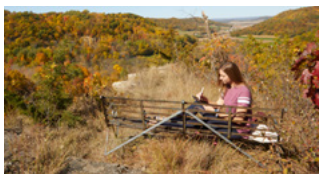


WALL OF FAME

8 inducted into Athletic Wall of Fame

See the whole issue
uwlax.edu/alumni/lantern/?issue=Winter+2020-21

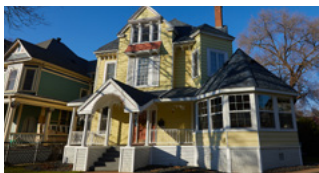
MORE STORIES FROM THIS ISSUE



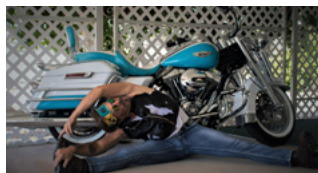
READY. SET. PAINT!



AN EAGLE'S EYE VIEW



A HOUSE WITH HISTORY



BALANCED BIKERS



FACULTY FAVES: ANNE GALBRAITH



NEW FIELDHOUSE WILL HAVE SOMETHING FOR EVERYONE



UWL TO HOST NATIONAL CHAMPIONSHIPS



THE ICEMAN AWARDETH

See the whole issue

uwlax.edu/alumni/lantern/?issue=Winter+2020-21



The times they are a changin'...
COVID-19 has brought change. Everywhere.

As we look for even more effective ways to support students and alumni, we may not be able to send publications, like The Lantern, to you as often. Help us in this change! Give us your email. Log into...



www.uwlax.edu/alumni/about/whats-new-with-you/

Thanks for supporting the UWL Alumni Association!